

Art Power

酒店建筑



海峡出版发行集团 | 福建科学技术出版社
THE STRAITS PUBLISHING & DISTRIBUTING GROUP | FUJIAN SCIENCE & TECHNOLOGY PUBLISHING HOUSE
深圳市艺力文化发展有限公司 编

ARTPOWER

Hilton Garden Inn Katowice, Poland

波兰 Katowice 希尔顿花园酒店

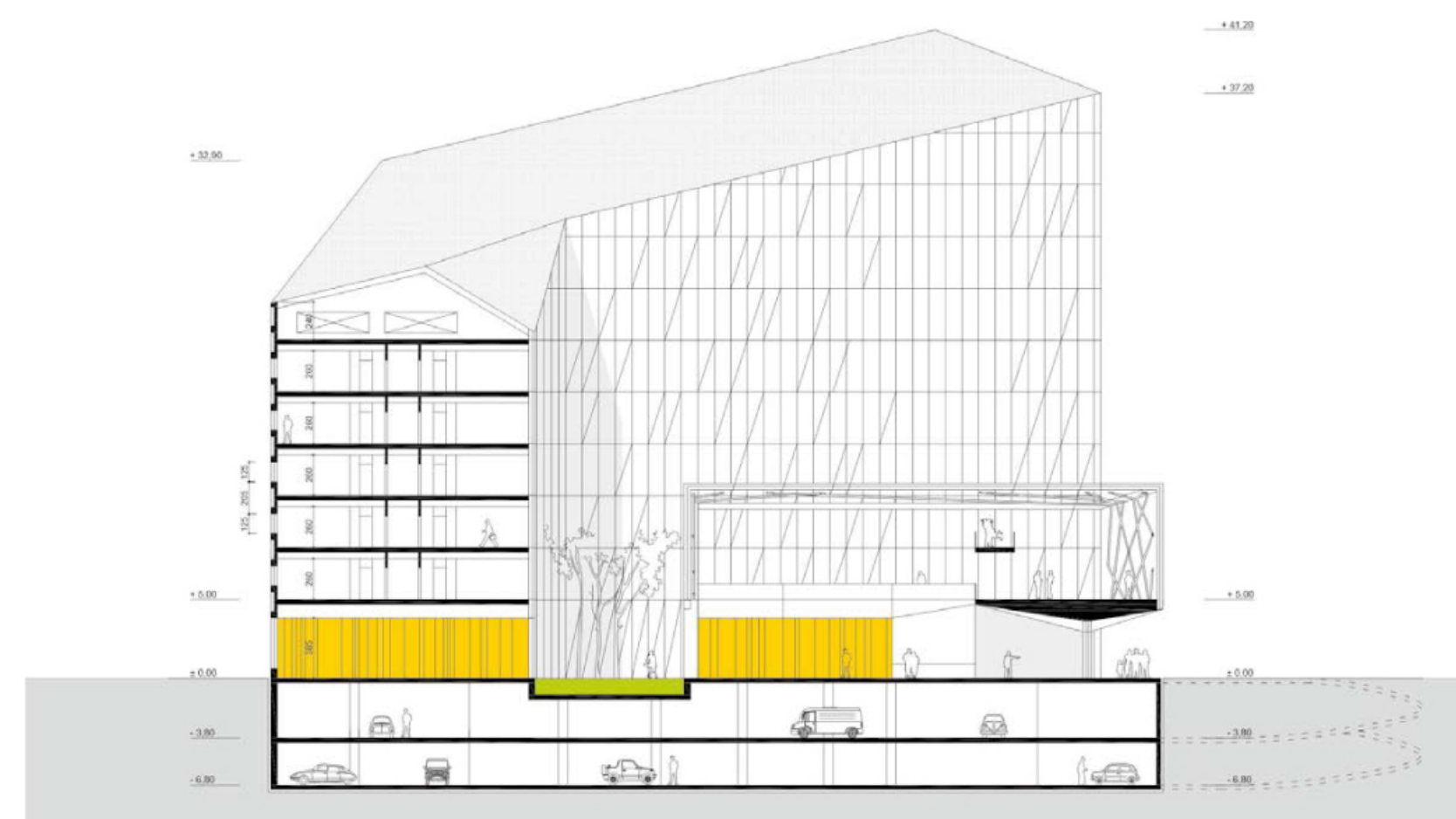
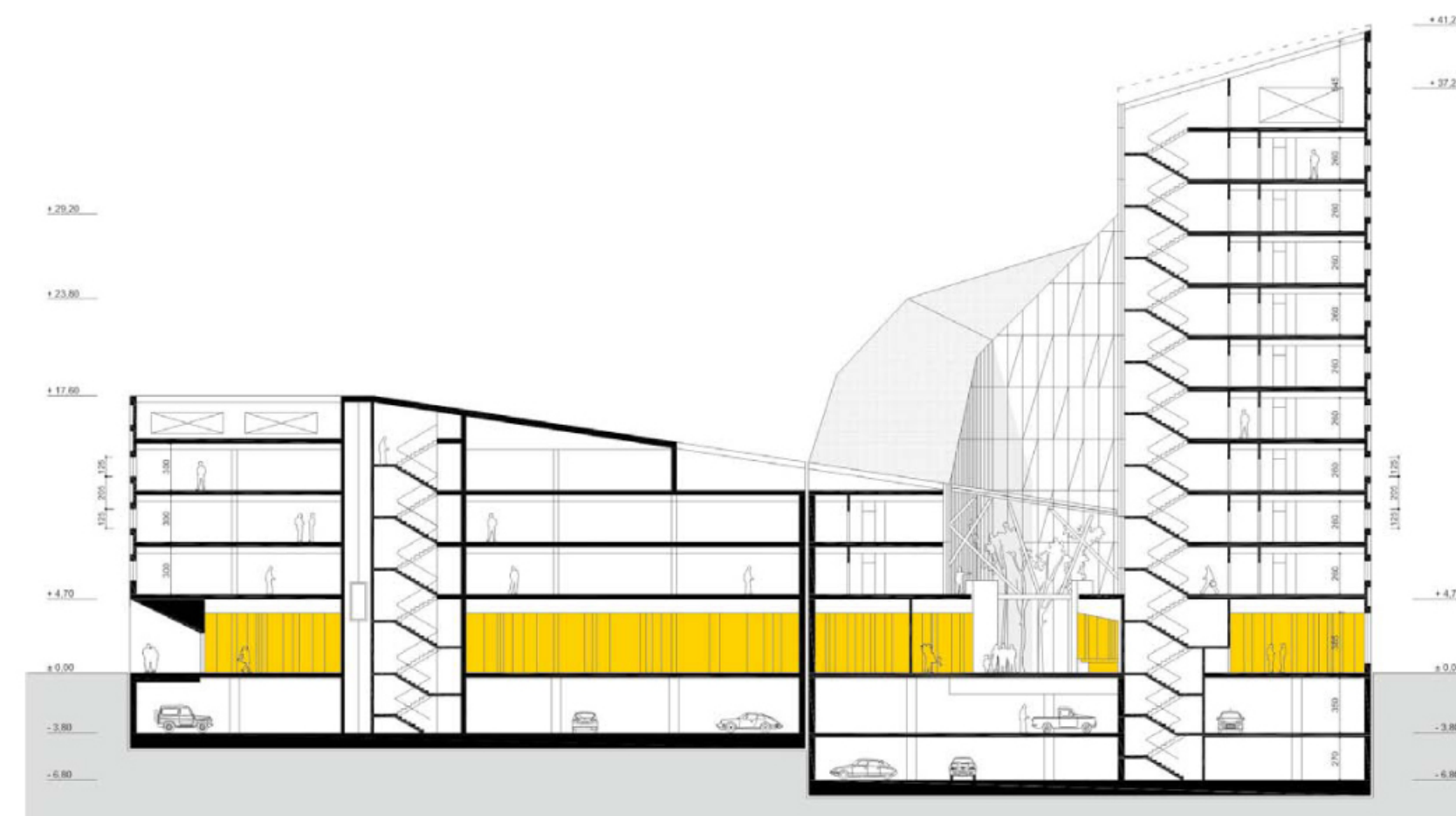


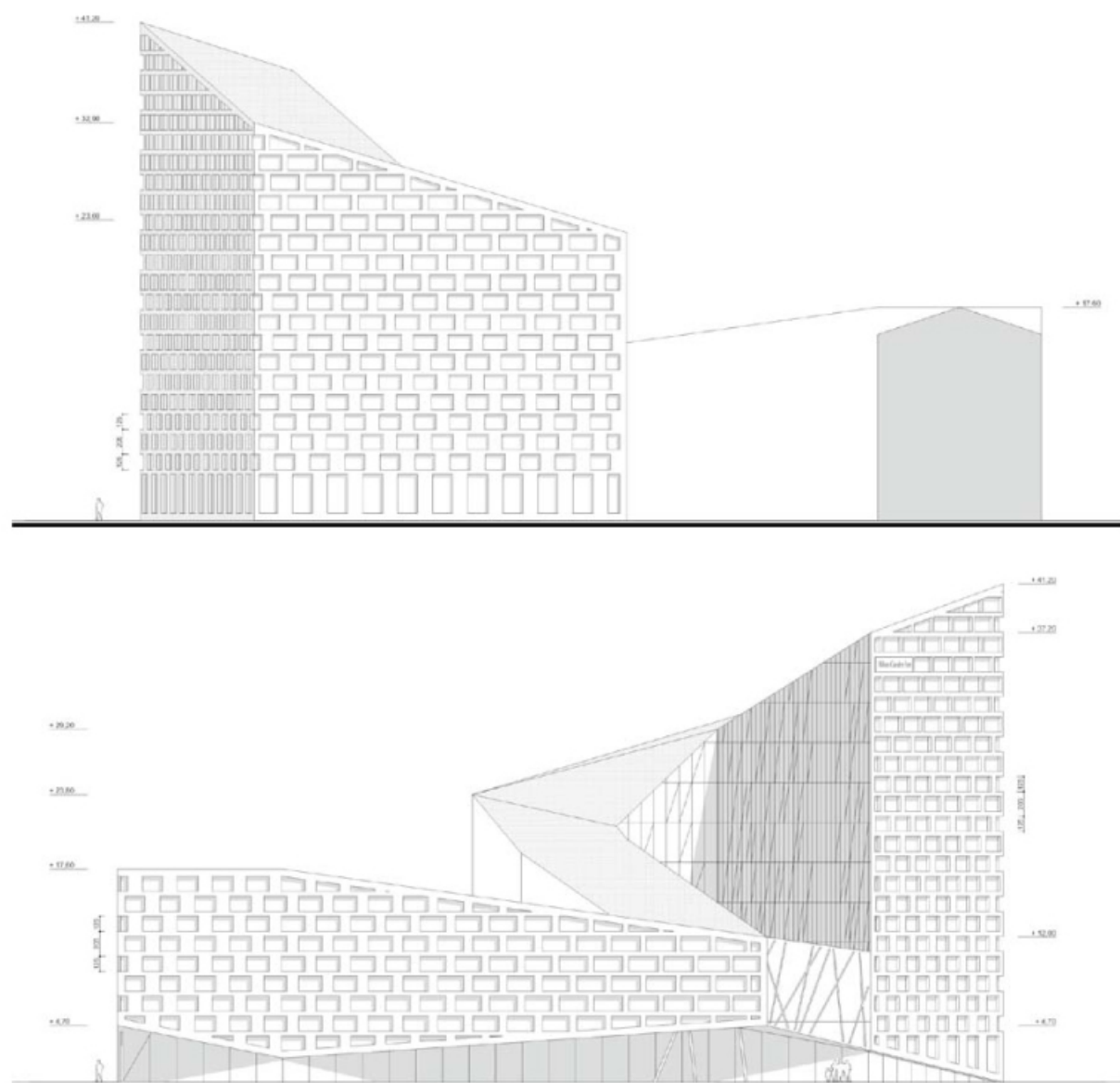
Design Agency
Jagiello Krysiak Architects

Designer
Marcin Jagiello, Jarosław
Krysiak

The building's form has been shaped by location and spatial determinants, such as the shape of the plot, overall dimensions of the surrounding buildings, river, high-voltage network, local and projected transport system. The plot has an irregular shape. Its narrower part is connected with the oldest streets of the city (Gliwicka St.), ending its way to the frontage of this street. The building is visually and functionally divided into two parts, the lower—offices and the higher—hotel. The heights of the specific parts are carefully chosen so that the new buildings fit into the surrounding existing buildings and do not conceal the residential ones.

The building wraps around an inner patio—garden—which is its heart. On the ground floor around this "heart" are located the most important function areas of the public building. The external elevations are inspired by the surrounding brick buildings. Large exterior openings are the result of an idea of transformation of the brick pattern (every second row of windows), which can be observed on a number of houses in the Gliwicka St..





建筑外形结合当地和空间的决定因素，精雕细作，如地皮形状、周围建筑的总体尺寸、河流、高压电网、本地和规划中的交通系统。建筑物的地皮属不规则形状，其狭窄部分与城市最古老的一条街道 (Gliwicka St.) 相连并止于该街道正面。建筑在视觉和功能上分成两部分，较矮建筑为写字楼，较高建筑为酒店。建筑特别部分的高度经过仔细甄选，以使新建筑与周围现有建筑融为一体，而又不掩盖住宅。

该建筑将一个内部庭院——花园包在其中，可称为建筑的“心脏”，在第一层该“心脏”周围，同时是最重要的公共建筑功能区。外部装饰受周围砖块建筑的影响，大型室外开放空间，灵感来源于砖块的变形理念（每隔2排窗户），该景致在 Gliwicka St. 大街上的许多房子随处可见。

